

Ethyl 1-*tert*-butyl-5-phenyl-1*H*-pyrazole-4-carboxylate

Hoong-Kun Fun,^{a*}‡ Ching Kheng Quah,^{a§} B. Chandrakantha,^b Arun M. Isloor^c and Prakash Shetty^d

^aX-ray Crystallography Unit, School of Physics, Universiti Sains Malaysia, 11800 USM, Penang, Malaysia, ^bDepartment of Chemistry, Manipal Institute of Technology, Manipal 576 104, India, ^cOrganic Chemistry Division, Department of Chemistry, National Institute of Technology–Karnataka, Surathkal, Mangalore 575 025, India, and ^dDepartment of Printing, Manipal Institute of Technology, Manipal 576 104, India

Correspondence e-mail: hkfun@usm.my

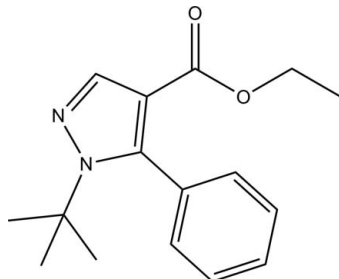
Received 30 July 2010; accepted 1 August 2010

Key indicators: single-crystal X-ray study; $T = 100$ K; mean $\sigma(\text{C}-\text{C}) = 0.003$ Å; R factor = 0.042; wR factor = 0.099; data-to-parameter ratio = 14.4.

In the title compound, $\text{C}_{16}\text{H}_{20}\text{N}_2\text{O}_2$, the pyrazole ring is essentially planar [maximum deviation = 0.008 (2) Å] and is inclined at an angle of 82.82 (10)° with respect to the phenyl ring. The crystal packing is consolidated by pairs of intermolecular $\text{C}-\text{H}\cdots\text{O}$ hydrogen bonds, which link the molecules into centrosymmetric dimers stacked along the a axis.

Related literature

For general background to pyrazole derivatives and their biological activity, see: Isloor *et al.* (2009); Lambert & Fowler (2005); Lan *et al.* (1999). For related structures, see: Fun *et al.* (2009; 2010*a,b*). For bond-length data, see: Allen *et al.* (1987). For the stability of the temperature controller used in the data collection, see: Cosier & Glazer (1986).



Experimental

Crystal data

 $\text{C}_{16}\text{H}_{20}\text{N}_2\text{O}_2$
 $M_r = 272.34$

Triclinic, $P\bar{1}$
 $a = 9.0665$ (2) Å
 $b = 9.3351$ (2) Å
 $c = 10.5408$ (3) Å
 $\alpha = 110.450$ (1)°
 $\beta = 113.987$ (1)°
 $\gamma = 97.645$ (2)°

$V = 723.22$ (3) Å³
 $Z = 2$
 Mo $K\alpha$ radiation
 $\mu = 0.08$ mm⁻¹
 $T = 100$ K
 $0.41 \times 0.20 \times 0.12$ mm

Data collection

Bruker SMART APEXII CCD
 area-detector diffractometer
 Absorption correction: multi-scan
 (SADABS; Bruker, 2009)
 $T_{\min} = 0.967$, $T_{\max} = 0.990$

12406 measured reflections
 2655 independent reflections
 2179 reflections with $I > 2\sigma(I)$
 $R_{\text{int}} = 0.038$

Refinement

$R[F^2 > 2\sigma(F^2)] = 0.042$
 $wR(F^2) = 0.099$
 $S = 1.04$
 2655 reflections

185 parameters
 H-atom parameters constrained
 $\Delta\rho_{\text{max}} = 0.22$ e Å⁻³
 $\Delta\rho_{\text{min}} = -0.20$ e Å⁻³

Table 1

Hydrogen-bond geometry (Å, °).

| $D-\text{H}\cdots A$ | $D-\text{H}$ | $\text{H}\cdots A$ | $D\cdots A$ | $D-\text{H}\cdots A$ |
|--|--------------|--------------------|-------------|----------------------|
| $\text{C}15-\text{H}15\text{B}\cdots\text{O}2^i$ | 0.97 | 2.53 | 3.367 (2) | 145 |

Symmetry code: (i) $-x + 1, -y, -z$.

Data collection: APEX2 (Bruker, 2009); cell refinement: SAINT (Bruker, 2009); data reduction: SAINT; program(s) used to solve structure: SHELXTL (Sheldrick, 2008); program(s) used to refine structure: SHELXTL; molecular graphics: SHELXTL; software used to prepare material for publication: SHELXTL and PLATON (Spek, 2009).

The authors thank Universiti Sains Malaysia (USM) for the Research University Golden Goose Grant (No. 1001/PFIZIK/811012). CKQ also thanks USM for the award of a USM fellowship. AMI is thankful to the Director, National Institute of Technology-Karnataka, Surathkal, India, for providing research facilities and for his encouragement.

Supplementary data and figures for this paper are available from the IUCr electronic archives (Reference: CI5147).

References

- Allen, F. H., Kennard, O., Watson, D. G., Brammer, L., Orpen, A. G. & Taylor, R. (1987). *J. Chem. Soc. Perkin Trans. 2*, pp. S1–19.
- Bruker (2009). APEX2, SAINT and SADABS. Bruker AXS Inc., Madison, Wisconsin, USA.
- Cosier, J. & Glazer, A. M. (1986). *J. Appl. Cryst.* **19**, 105–107.
- Fun, H.-K., Goh, J. H., Chandrakantha, B., Isloor, A. M. & Shetty, P. (2010*a*). *Acta Cryst.* **E66**, o1828–o1829.
- Fun, H.-K., Quah, C. K., Chandrakantha, B., Isloor, A. M. & Shetty, P. (2010*b*). *Acta Cryst.* **E66**, o2282–o2283.
- Fun, H.-K., Quah, C. K., Sarveswari, S., Vijayakumar, V. & Prasath, R. (2009). *Acta Cryst.* **E65**, o2707–o2708.
- Isloor, A. M., Kalluraya, B. & Shetty, P. (2009). *Eur. J. Med. Chem.* **44**, 3784–3787.
- Lambert, D. M. & Fowler, C. J. (2005). *J. Med. Chem.* **48**, 5059–5087.
- Lan, R., Liu, Q., Fan, P., Lin, S., Fernando, S. R., McCallion, D. Pertwee, R. & Makriyannis, A. (1999). *J. Med. Chem.* **42**, 769–776.
- Sheldrick, G. M. (2008). *Acta Cryst.* **A64**, 112–122.
- Spek, A. L. (2009). *Acta Cryst.* **D65**, 148–155.

supplementary materials

Acta Cryst. (2010). E66, o2228 [doi:10.1107/S1600536810030643]

Ethyl 1-*tert*-butyl-5-phenyl-1*H*-pyrazole-4-carboxylate

H.-K. Fun, C. K. Quah, B. Chandrakantha, A. M. Isloor and P. Shetty

Comment

Pyrazole and its derivatives represent one of the most active classes of compounds possessing a wide spectrum of biological activities. During the past years, considerable evidences have been accumulated to demonstrate the efficacy of pyrazole derivatives including antibacterial (Isloor *et al.*, 2009), antifungal (Lambert & Fowler, 2005), herbicidal (Lan *et al.*, 1999), insecticidal and other biological activities. Keeping in view of the importance of the pyrazole derivatives, we have synthesized a new pyrazole molecule, with the aim of studying its single crystal structure.

The title molecule (Fig. 1) consists of a phenyl ring (C1-C6), a *tert*-butyl moiety (C10-C13) and a ethyl carboxylate moiety (O1/O2/C14-C16) attached to a pyrazole ring (N1/N2/C7-C9). The pyrazole ring is essentially planar (maximum deviation = 0.008 (2) Å for atom N2) and is inclined at an angle of 82.82 (10)° with the phenyl ring. Bond lengths and angles are within normal ranges, and comparable to closely related structures (Fun *et al.*, 2009,2010*a,b*).

In the crystal structure (Fig. 2), the crystal packing is consolidated by pairs of intermolecular C15—H15B...O2 hydrogen bonds linking the molecules into centrosymmetric dimers which are stacked down the *a* axis.

Experimental

A mixture of ethyl-3-(dimethylamino)-2-(phenylcarbonyl)prop-2-enoate (2.0 g, 0.0080 mol), *tert*-butyl hydrazine.HCl (1.09 g, 0.0088 mol) and sodium bicarbonate (2.05 g, 0.0240 mol) in absolute ethanol (25 ml) was refluxed for 2 h. Reaction completion was monitored through thin layer chromatography and the reaction mixture was evaporated under reduced pressure. The residue was stirred with 1.5N HCl and the solid separated was filtered and dried under vacuum. The solid obtained was purified by column chromatography using silica gel 60-120 mesh size and petroleum ether-ethyl acetate as eluent to afford title compound as yellow solid (1.5g, 71%); melting point 343-347 K.

Refinement

All H atoms were positioned geometrically and refined using a riding model with C-H = 0.93-0.97 Å and $U_{\text{iso}}(\text{H}) = 1.2$ or $1.5 U_{\text{eq}}(\text{C})$. A rotating-group model was applied for the methyl groups.

Figures

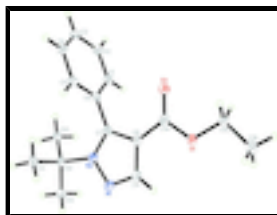


Fig. 1. The molecular structure of the title compound, showing 50% probability displacement ellipsoids for non-H atoms and the atom-numbering scheme.

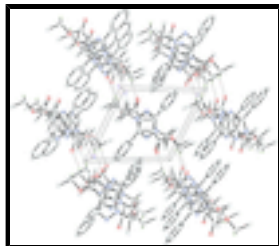


Fig. 2. The crystal structure of the title compound, viewed along the a axis. H atoms not involved in hydrogen bonds (dashed lines) have been omitted for clarity.

Ethyl 1-*tert*-butyl-5-phenyl-1*H*-pyrazole-4-carboxylate

Crystal data

| | |
|--------------------------------|---|
| $C_{16}H_{20}N_2O_2$ | $Z = 2$ |
| $M_r = 272.34$ | $F(000) = 292$ |
| Triclinic, $P\bar{1}$ | $D_x = 1.251 \text{ Mg m}^{-3}$ |
| Hall symbol: -P 1 | Mo $K\alpha$ radiation, $\lambda = 0.71073 \text{ \AA}$ |
| $a = 9.0665 (2) \text{ \AA}$ | Cell parameters from 6289 reflections |
| $b = 9.3351 (2) \text{ \AA}$ | $\theta = 2.4\text{--}34.3^\circ$ |
| $c = 10.5408 (3) \text{ \AA}$ | $\mu = 0.08 \text{ mm}^{-1}$ |
| $\alpha = 110.450 (1)^\circ$ | $T = 100 \text{ K}$ |
| $\beta = 113.987 (1)^\circ$ | Needle, yellow |
| $\gamma = 97.645 (2)^\circ$ | $0.41 \times 0.20 \times 0.12 \text{ mm}$ |
| $V = 723.22 (3) \text{ \AA}^3$ | |

Data collection

| | |
|--|--|
| Bruker SMART APEXII CCD area-detector diffractometer | 2655 independent reflections |
| Radiation source: fine-focus sealed tube graphite | 2179 reflections with $I > 2\sigma(I)$ |
| φ and ω scans | $R_{\text{int}} = 0.038$ |
| Absorption correction: multi-scan (SADABS; Bruker, 2009) | $\theta_{\text{max}} = 25.5^\circ$, $\theta_{\text{min}} = 2.4^\circ$ |
| $T_{\text{min}} = 0.967$, $T_{\text{max}} = 0.990$ | $h = -10 \rightarrow 10$ |
| 12406 measured reflections | $k = -11 \rightarrow 11$ |
| | $l = -12 \rightarrow 12$ |

Refinement

| | |
|---------------------------------|--|
| Refinement on F^2 | Primary atom site location: structure-invariant direct methods |
| Least-squares matrix: full | Secondary atom site location: difference Fourier map |
| $R[F^2 > 2\sigma(F^2)] = 0.042$ | Hydrogen site location: inferred from neighbouring sites |
| $wR(F^2) = 0.099$ | H-atom parameters constrained |
| $S = 1.04$ | $w = 1/[\sigma^2(F_o^2) + (0.0402P)^2 + 0.3388P]$ |
| 2655 reflections | where $P = (F_o^2 + 2F_c^2)/3$ |
| | $(\Delta/\sigma)_{\text{max}} = 0.001$ |

185 parameters

$$\Delta\rho_{\max} = 0.22 \text{ e } \text{\AA}^{-3}$$

0 restraints

$$\Delta\rho_{\min} = -0.20 \text{ e } \text{\AA}^{-3}$$

Special details

Experimental. The crystal was placed in the cold stream of an Oxford Cyrosystems Cobra open-flow nitrogen cryostat (Cosier & Glazer, 1986) operating at 100.0 (1) K.

Geometry. All esds (except the esd in the dihedral angle between two l.s. planes) are estimated using the full covariance matrix. The cell esds are taken into account individually in the estimation of esds in distances, angles and torsion angles; correlations between esds in cell parameters are only used when they are defined by crystal symmetry. An approximate (isotropic) treatment of cell esds is used for estimating esds involving l.s. planes.

Refinement. Refinement of F^2 against ALL reflections. The weighted R-factor wR and goodness of fit S are based on F^2 , conventional R-factors R are based on F, with F set to zero for negative F^2 . The threshold expression of $F^2 > 2\text{sigma}(F^2)$ is used only for calculating R-factors(gt) etc. and is not relevant to the choice of reflections for refinement. R-factors based on F^2 are statistically about twice as large as those based on F, and R- factors based on ALL data will be even larger.

Fractional atomic coordinates and isotropic or equivalent isotropic displacement parameters (\AA^2)

| | x | y | z | $U_{\text{iso}}^*/U_{\text{eq}}$ |
|------|--------------|--------------|--------------|----------------------------------|
| O1 | 0.53056 (13) | 0.32289 (13) | 0.13622 (12) | 0.0190 (3) |
| O2 | 0.52454 (14) | 0.14419 (13) | 0.23468 (13) | 0.0247 (3) |
| N1 | 0.85134 (17) | 0.68033 (16) | 0.57591 (15) | 0.0199 (3) |
| N2 | 0.87235 (16) | 0.58254 (15) | 0.64872 (15) | 0.0169 (3) |
| C1 | 0.8628 (2) | 0.18877 (19) | 0.56614 (19) | 0.0203 (4) |
| H1A | 0.9334 | 0.2079 | 0.5259 | 0.024* |
| C2 | 0.8544 (2) | 0.0604 (2) | 0.60345 (19) | 0.0223 (4) |
| H2A | 0.9206 | -0.0053 | 0.5895 | 0.027* |
| C3 | 0.7477 (2) | 0.02988 (19) | 0.66145 (19) | 0.0216 (4) |
| H3A | 0.7430 | -0.0557 | 0.6872 | 0.026* |
| C4 | 0.6484 (2) | 0.12657 (19) | 0.68093 (19) | 0.0209 (4) |
| H4A | 0.5754 | 0.1050 | 0.7183 | 0.025* |
| C5 | 0.65692 (19) | 0.25632 (19) | 0.64487 (18) | 0.0187 (4) |
| H5A | 0.5899 | 0.3213 | 0.6583 | 0.022* |
| C6 | 0.76584 (19) | 0.28886 (19) | 0.58869 (18) | 0.0166 (4) |
| C7 | 0.77480 (19) | 0.42591 (18) | 0.54764 (18) | 0.0160 (3) |
| C8 | 0.69038 (19) | 0.42220 (19) | 0.40266 (18) | 0.0166 (4) |
| C9 | 0.7435 (2) | 0.58270 (19) | 0.42835 (19) | 0.0190 (4) |
| H9A | 0.7070 | 0.6163 | 0.3507 | 0.023* |
| C10 | 0.98019 (19) | 0.66369 (19) | 0.82223 (18) | 0.0178 (4) |
| C11 | 0.8627 (2) | 0.6922 (2) | 0.89211 (19) | 0.0233 (4) |
| H11A | 0.7959 | 0.7535 | 0.8527 | 0.035* |
| H11B | 0.9299 | 0.7508 | 1.0030 | 0.035* |
| H11C | 0.7884 | 0.5902 | 0.8646 | 0.035* |
| C12 | 1.0849 (2) | 0.5612 (2) | 0.87611 (19) | 0.0213 (4) |
| H12A | 1.1484 | 0.5365 | 0.8219 | 0.032* |
| H12B | 1.0101 | 0.4628 | 0.8548 | 0.032* |
| H12C | 1.1623 | 0.6199 | 0.9856 | 0.032* |

supplementary materials

| | | | | |
|------|--------------|--------------|---------------|------------|
| C13 | 1.1020 (2) | 0.8262 (2) | 0.8701 (2) | 0.0232 (4) |
| H13A | 1.0376 | 0.8944 | 0.8428 | 0.035* |
| H13B | 1.1678 | 0.8091 | 0.8175 | 0.035* |
| H13C | 1.1771 | 0.8768 | 0.9802 | 0.035* |
| C14 | 0.57491 (19) | 0.2808 (2) | 0.25368 (19) | 0.0178 (4) |
| C15 | 0.4271 (2) | 0.19063 (19) | -0.01920 (18) | 0.0204 (4) |
| H15A | 0.3269 | 0.1272 | -0.0275 | 0.024* |
| H15B | 0.4921 | 0.1206 | -0.0422 | 0.024* |
| C16 | 0.3759 (2) | 0.2633 (2) | -0.1304 (2) | 0.0261 (4) |
| H16A | 0.3137 | 0.1788 | -0.2348 | 0.039* |
| H16B | 0.4759 | 0.3313 | -0.1164 | 0.039* |
| H16C | 0.3051 | 0.3263 | -0.1112 | 0.039* |

Atomic displacement parameters (\AA^2)

| | U^{11} | U^{22} | U^{33} | U^{12} | U^{13} | U^{23} |
|-----|------------|-------------|------------|-------------|------------|------------|
| O1 | 0.0228 (6) | 0.0165 (6) | 0.0116 (6) | 0.0008 (5) | 0.0054 (5) | 0.0054 (5) |
| O2 | 0.0322 (6) | 0.0163 (7) | 0.0189 (7) | -0.0002 (5) | 0.0098 (5) | 0.0070 (5) |
| N1 | 0.0249 (7) | 0.0164 (7) | 0.0176 (8) | 0.0037 (6) | 0.0089 (6) | 0.0094 (6) |
| N2 | 0.0197 (7) | 0.0145 (7) | 0.0143 (7) | 0.0020 (6) | 0.0070 (6) | 0.0070 (6) |
| C1 | 0.0222 (8) | 0.0189 (9) | 0.0181 (9) | 0.0033 (7) | 0.0100 (7) | 0.0075 (7) |
| C2 | 0.0250 (8) | 0.0169 (9) | 0.0211 (9) | 0.0067 (7) | 0.0085 (8) | 0.0076 (7) |
| C3 | 0.0262 (8) | 0.0142 (9) | 0.0164 (9) | 0.0001 (7) | 0.0043 (7) | 0.0080 (7) |
| C4 | 0.0222 (8) | 0.0193 (9) | 0.0156 (9) | -0.0014 (7) | 0.0075 (7) | 0.0069 (7) |
| C5 | 0.0191 (8) | 0.0159 (9) | 0.0159 (9) | 0.0021 (7) | 0.0069 (7) | 0.0047 (7) |
| C6 | 0.0179 (7) | 0.0134 (8) | 0.0098 (8) | -0.0009 (6) | 0.0022 (6) | 0.0035 (6) |
| C7 | 0.0163 (7) | 0.0142 (9) | 0.0161 (8) | 0.0028 (6) | 0.0088 (7) | 0.0049 (7) |
| C8 | 0.0185 (8) | 0.0170 (9) | 0.0151 (8) | 0.0046 (7) | 0.0088 (7) | 0.0077 (7) |
| C9 | 0.0227 (8) | 0.0189 (9) | 0.0153 (9) | 0.0044 (7) | 0.0082 (7) | 0.0095 (7) |
| C10 | 0.0192 (8) | 0.0158 (9) | 0.0124 (8) | 0.0013 (7) | 0.0057 (7) | 0.0039 (7) |
| C11 | 0.0243 (8) | 0.0228 (10) | 0.0180 (9) | 0.0039 (7) | 0.0099 (7) | 0.0061 (8) |
| C12 | 0.0230 (8) | 0.0194 (9) | 0.0140 (9) | 0.0025 (7) | 0.0051 (7) | 0.0059 (7) |
| C13 | 0.0220 (8) | 0.0198 (9) | 0.0189 (9) | 0.0001 (7) | 0.0058 (7) | 0.0067 (7) |
| C14 | 0.0182 (7) | 0.0201 (9) | 0.0168 (9) | 0.0050 (7) | 0.0093 (7) | 0.0095 (7) |
| C15 | 0.0224 (8) | 0.0170 (9) | 0.0135 (9) | 0.0013 (7) | 0.0059 (7) | 0.0034 (7) |
| C16 | 0.0282 (9) | 0.0258 (10) | 0.0173 (9) | 0.0050 (8) | 0.0076 (8) | 0.0079 (8) |

Geometric parameters (\AA , $^\circ$)

| | | | |
|--------|-------------|----------|-----------|
| O1—C14 | 1.3511 (18) | C8—C14 | 1.467 (2) |
| O1—C15 | 1.4550 (18) | C9—H9A | 0.93 |
| O2—C14 | 1.2116 (18) | C10—C12 | 1.524 (2) |
| N1—C9 | 1.320 (2) | C10—C11 | 1.524 (2) |
| N1—N2 | 1.3695 (17) | C10—C13 | 1.530 (2) |
| N2—C7 | 1.363 (2) | C11—H11A | 0.96 |
| N2—C10 | 1.502 (2) | C11—H11B | 0.96 |
| C1—C2 | 1.388 (2) | C11—H11C | 0.96 |
| C1—C6 | 1.391 (2) | C12—H12A | 0.96 |
| C1—H1A | 0.93 | C12—H12B | 0.96 |

| | | | |
|-------------|-------------|---------------|--------------|
| C2—C3 | 1.386 (2) | C12—H12C | 0.96 |
| C2—H2A | 0.93 | C13—H13A | 0.96 |
| C3—C4 | 1.380 (2) | C13—H13B | 0.96 |
| C3—H3A | 0.93 | C13—H13C | 0.96 |
| C4—C5 | 1.392 (2) | C15—C16 | 1.499 (2) |
| C4—H4A | 0.93 | C15—H15A | 0.97 |
| C5—C6 | 1.393 (2) | C15—H15B | 0.97 |
| C5—H5A | 0.93 | C16—H16A | 0.96 |
| C6—C7 | 1.489 (2) | C16—H16B | 0.96 |
| C7—C8 | 1.388 (2) | C16—H16C | 0.96 |
| C8—C9 | 1.403 (2) | | |
| C14—O1—C15 | 115.77 (12) | C12—C10—C13 | 108.71 (13) |
| C9—N1—N2 | 105.07 (12) | C11—C10—C13 | 109.39 (14) |
| C7—N2—N1 | 111.67 (12) | C10—C11—H11A | 109.5 |
| C7—N2—C10 | 131.06 (13) | C10—C11—H11B | 109.5 |
| N1—N2—C10 | 116.93 (12) | H11A—C11—H11B | 109.5 |
| C2—C1—C6 | 120.21 (15) | C10—C11—H11C | 109.5 |
| C2—C1—H1A | 119.9 | H11A—C11—H11C | 109.5 |
| C6—C1—H1A | 119.9 | H11B—C11—H11C | 109.5 |
| C3—C2—C1 | 120.18 (16) | C10—C12—H12A | 109.5 |
| C3—C2—H2A | 119.9 | C10—C12—H12B | 109.5 |
| C1—C2—H2A | 119.9 | H12A—C12—H12B | 109.5 |
| C4—C3—C2 | 119.92 (15) | C10—C12—H12C | 109.5 |
| C4—C3—H3A | 120.0 | H12A—C12—H12C | 109.5 |
| C2—C3—H3A | 120.0 | H12B—C12—H12C | 109.5 |
| C3—C4—C5 | 120.25 (15) | C10—C13—H13A | 109.5 |
| C3—C4—H4A | 119.9 | C10—C13—H13B | 109.5 |
| C5—C4—H4A | 119.9 | H13A—C13—H13B | 109.5 |
| C4—C5—C6 | 120.01 (15) | C10—C13—H13C | 109.5 |
| C4—C5—H5A | 120.0 | H13A—C13—H13C | 109.5 |
| C6—C5—H5A | 120.0 | H13B—C13—H13C | 109.5 |
| C1—C6—C5 | 119.40 (14) | O2—C14—O1 | 123.37 (14) |
| C1—C6—C7 | 119.91 (14) | O2—C14—C8 | 126.18 (14) |
| C5—C6—C7 | 120.65 (14) | O1—C14—C8 | 110.45 (13) |
| N2—C7—C8 | 106.22 (13) | O1—C15—C16 | 107.43 (13) |
| N2—C7—C6 | 125.57 (14) | O1—C15—H15A | 110.2 |
| C8—C7—C6 | 128.21 (14) | C16—C15—H15A | 110.2 |
| C7—C8—C9 | 105.09 (14) | O1—C15—H15B | 110.2 |
| C7—C8—C14 | 127.70 (14) | C16—C15—H15B | 110.2 |
| C9—C8—C14 | 127.19 (14) | H15A—C15—H15B | 108.5 |
| N1—C9—C8 | 111.93 (14) | C15—C16—H16A | 109.5 |
| N1—C9—H9A | 124.0 | C15—C16—H16B | 109.5 |
| C8—C9—H9A | 124.0 | H16A—C16—H16B | 109.5 |
| N2—C10—C12 | 110.47 (13) | C15—C16—H16C | 109.5 |
| N2—C10—C11 | 108.18 (12) | H16A—C16—H16C | 109.5 |
| C12—C10—C11 | 111.78 (13) | H16B—C16—H16C | 109.5 |
| N2—C10—C13 | 108.24 (12) | | |
| C9—N1—N2—C7 | -1.56 (17) | C6—C7—C8—C9 | -179.96 (15) |

supplementary materials

| | | | |
|--------------|--------------|----------------|--------------|
| C9—N1—N2—C10 | -175.57 (13) | N2—C7—C8—C14 | 177.44 (15) |
| C6—C1—C2—C3 | 0.9 (2) | C6—C7—C8—C14 | -1.8 (3) |
| C1—C2—C3—C4 | 0.5 (2) | N2—N1—C9—C8 | 1.04 (18) |
| C2—C3—C4—C5 | -1.0 (2) | C7—C8—C9—N1 | -0.18 (18) |
| C3—C4—C5—C6 | 0.1 (2) | C14—C8—C9—N1 | -178.40 (15) |
| C2—C1—C6—C5 | -1.8 (2) | C7—N2—C10—C12 | 44.2 (2) |
| C2—C1—C6—C7 | -179.70 (15) | N1—N2—C10—C12 | -143.23 (13) |
| C4—C5—C6—C1 | 1.3 (2) | C7—N2—C10—C11 | -78.5 (2) |
| C4—C5—C6—C7 | 179.20 (14) | N1—N2—C10—C11 | 94.12 (15) |
| N1—N2—C7—C8 | 1.46 (17) | C7—N2—C10—C13 | 163.07 (15) |
| C10—N2—C7—C8 | 174.38 (15) | N1—N2—C10—C13 | -24.31 (18) |
| N1—N2—C7—C6 | -179.31 (14) | C15—O1—C14—O2 | -4.6 (2) |
| C10—N2—C7—C6 | -6.4 (3) | C15—O1—C14—C8 | 175.15 (12) |
| C1—C6—C7—N2 | -97.7 (2) | C7—C8—C14—O2 | 5.7 (3) |
| C5—C6—C7—N2 | 84.4 (2) | C9—C8—C14—O2 | -176.47 (16) |
| C1—C6—C7—C8 | 81.3 (2) | C7—C8—C14—O1 | -174.06 (14) |
| C5—C6—C7—C8 | -96.5 (2) | C9—C8—C14—O1 | 3.8 (2) |
| N2—C7—C8—C9 | -0.76 (17) | C14—O1—C15—C16 | 173.80 (13) |

Hydrogen-bond geometry (\AA , $^\circ$)

| $D-H\cdots A$ | $D-H$ | $H\cdots A$ | $D\cdots A$ | $D-H\cdots A$ |
|-----------------------------------|-------|-------------|-------------|---------------|
| C15—H15B \cdots O2 ⁱ | 0.97 | 2.53 | 3.367 (2) | 145 |

Symmetry codes: (i) $-x+1, -y, -z$.

Fig. 1

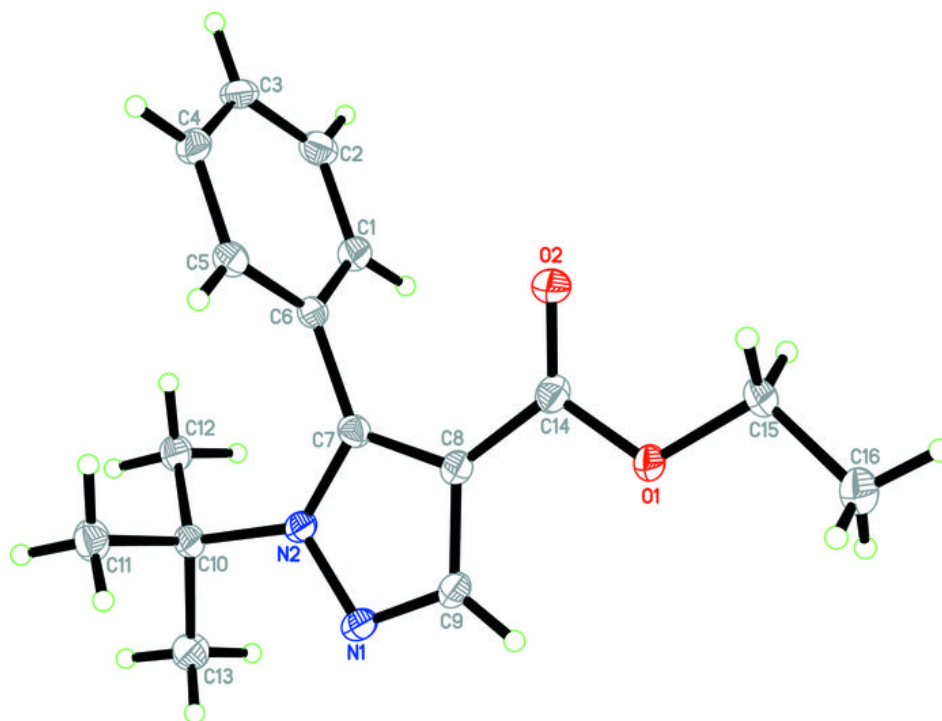


Fig. 2

